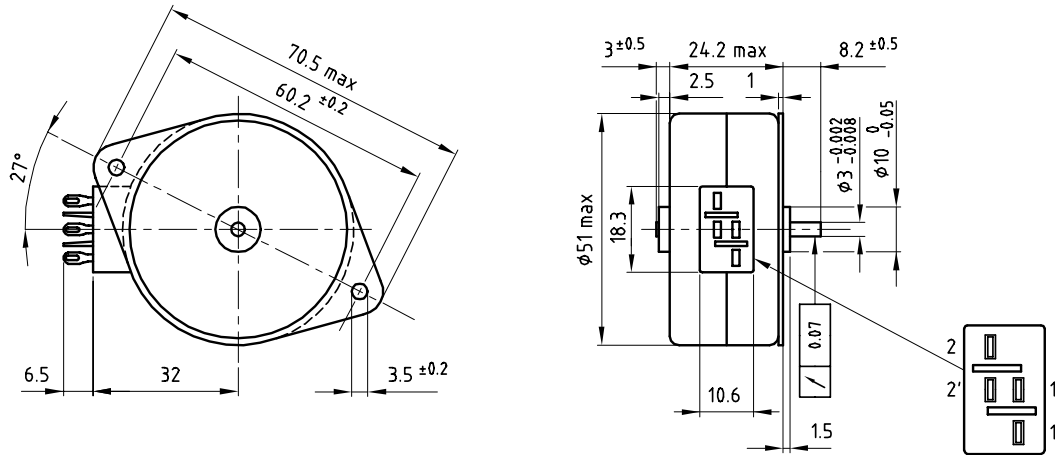


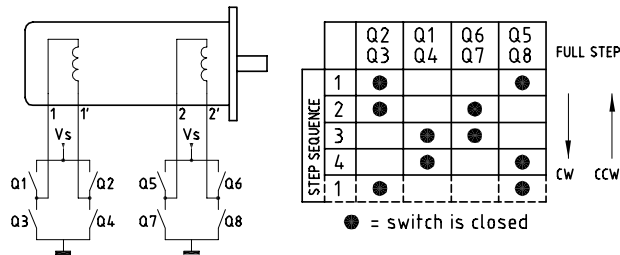
## Dimensional drawing



## Motor data

Motor order number	9904 112 +	31206	
Number of phases		2	
Drive Electronics		Bipolar	
Nominal Voltage	[V]	5	
Number of steps per revolution		48	
Step angle	[°]	7.5	
Step angle tolerance	[°]	± 0.4	
Max. working Torque	[mNm]	45	
Holding Torque	[mNm]	55	
Absorbed power	[W]	3.5	
Resistance per phase	[Ohm]	7	
Inductance per phase	[mH]	18	
Current per phase	[mA]	500	
Thermal resistance winding-ambient	[K/W]	13	
Rotor Moment of Inertia	[kgm <sup>2</sup> ]	1.1x10 <sup>-6</sup>	

## Electrical Connection



## General data

x	Type of bearings	sleeve	
x	Maximum radial load	5	N
x	Maximum axial load	1.5	N
x	Ambient temp. range operating	-20/+70	°C
x	Ambient temp. range storage	-40/+100	°C
x	Mass of motor	170	g

## Product combinations

- x Gearbox S52A
- x Gearbox S70A
- x Gearbox S70B