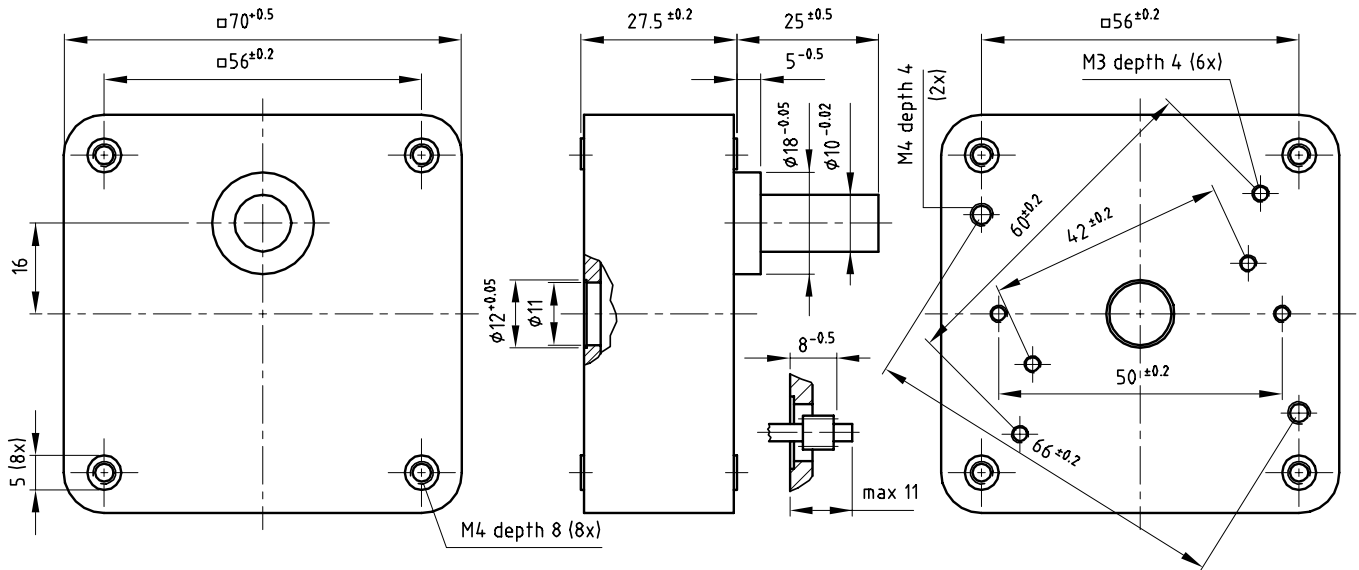


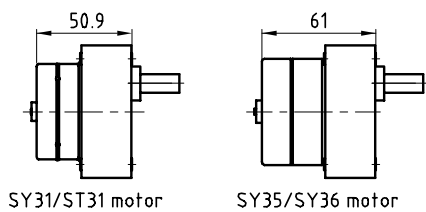
Dimensional drawing



Gearbox data

Gearbox Order number	Exact ratio	Number of stages	Efficiency [%]	Maximum torque continuous [Nm]	Maximum torque intermittent [Nm]	Direction of rotation w.r.t. motor
S70B0025AA	25:1	3	73	1.3	1.8	≠
S70B0050AA	50:1	3	73	2.6	3.7	≠
S70B0100AA	100:1	4	65	4.6	6.5	=
S70B0125AA	125:1	4	65	5.7	8.1	=
S70B0250AA	250:1	4	65	7.0	10.0	=
S70B0500AA	500:1	5	59	7.0	10.0	≠
S70B0625AA	625:1	5	59	7.0	10.0	≠
S70B5000AA	5000:1	6	53	7.0	10.0	=

Product combinations



Order number of motor/gearbox :
Last 6 digits of motor number + gearbox number

General data

*	Bearing on output shaft	sleeve	
*	Maximum radial load	100	N
*	Maximum axial load	20	N
*	Backlash at nominal load		°
*	Max. recommended input speed	500	rpm
*	Temperature range	-5/+60	°C

Options

- * Custom ratios
- * Custom shafts
- * Ball bearings on output shaft