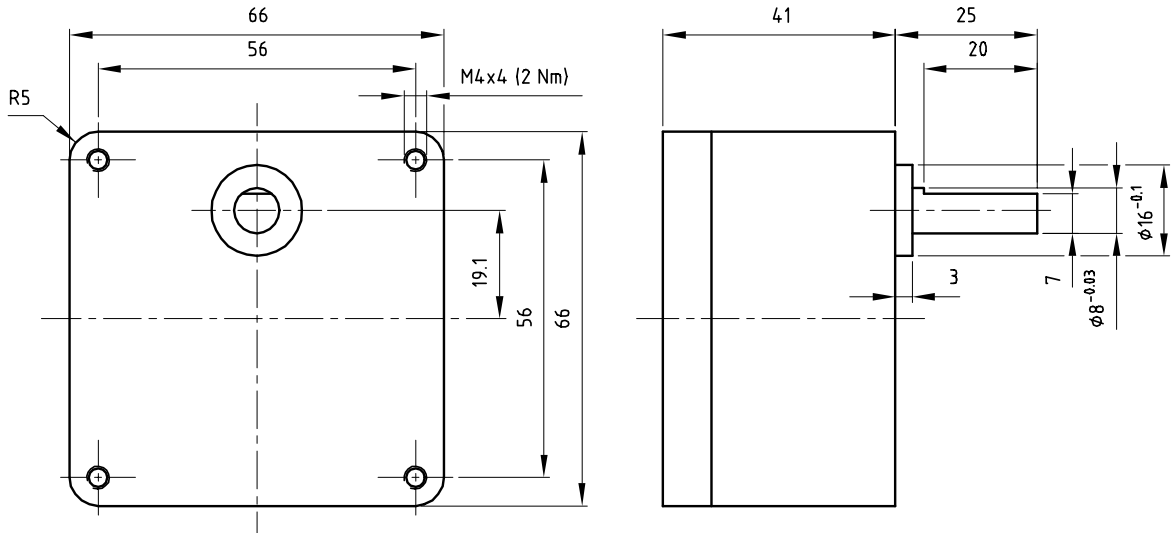


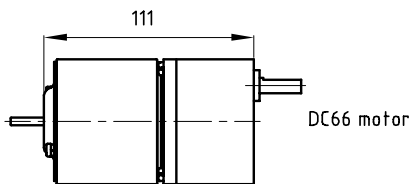
Dimensional drawing



Gearbox data

Gearbox Order number	Ratio	Number of stages	Efficiency [%]	Maximum torque continuous [Nm]	Maximum torque intermittent [Nm]	Direction of rotation w.r.t. motor	Weight [g]
S66A0005AA	5:1	3	70	1.4	1.6	≠	460
S66A0012AA	12.5:1	3	70	1.5	2.0	≠	460
S66A0025AA	25:1	4	65	2.0	2.4	=	480
S66A0050AA	50:1	4	65	2.8	3.4	=	480
S66A0100AA	100:1	5	60	3.5	4.4	≠	500
S66A0125AA	125:1	5	60	3.8	4.7	≠	500
S66A0250AA	250:1	6	55	4.4	5.2	=	520
S66A0500AA	500:1	6	55	4.7	5.6	=	520

Product combinations



Order number of gearmotor :
Motor number + gearbox number

General data

* Bearing on output shaft	sleeve	
* Maximum radial load 5 mm from mounting face	25	N
* Maximum axial load	20	N
* Maximum press on force	200	N
* Radial play	<0.05	mm
* Axial play	0.05-0.250	mm
* Maximum static torque	6	Nm
* Max. recommended input speed	3000	rpm
* Backlash at no load	2	°
* Backlash at nominal load	3	°
* Temperature range	-30/+65	°C

Options

- * Ball bearings
- * Custom shafts
- * Custom ratios
- * Lower backlash version