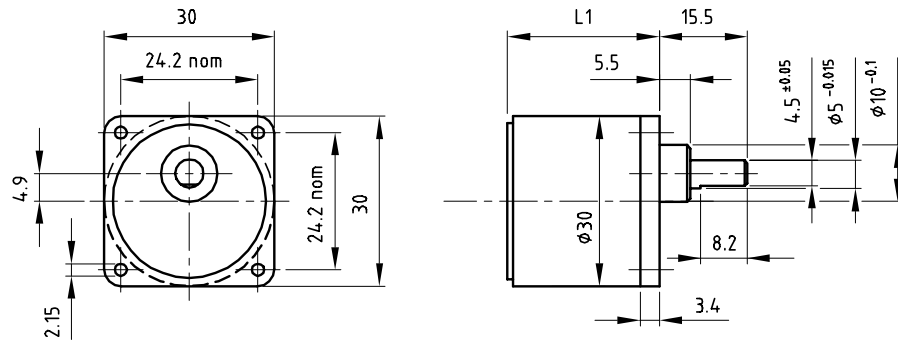


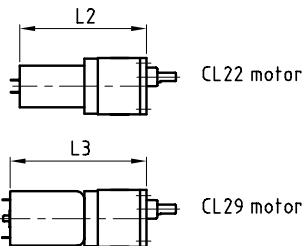
## Dimensional drawing



## Gearbox data

Gearbox Order number	Ratio	Number of stages	Efficiency [%]	Maximum torque continuous [Nm]	Maximum torque intermittent [Nm]	Direction of rotation w.r.t. motor	Weight [g]	L1 [mm]	L2 [mm]	L3 [mm]
S30A0015AA	15:1	3	73	0.07	0.2	≠	40	18.5	58.7	64.0
S30A0030AA	30:1	3	73	0.07	0.2	≠	40	18.5	58.7	64.0
S30A0060AA	60:1	4	65	0.10	0.3	=	45	21.0	61.2	66.5
S30A0100AA	100:1	4	65	0.10	0.3	=	45	21.0	61.2	66.5
S30A0200AA	200:1	5	59	0.20	0.6	≠	50	26.0	66.2	71.5
S30A0500AA	500:1	6	52	0.20	0.6	=	50	26.0	66.2	71.5

## Product combinations



## Order number of motor/gearbox

Last 6 digits of motor number + gearbox number

## General data

*	Bearing on output shaft	sleeve	
*	Maximum radial load 5 mm from bearing	30	N
*	Maximum axial load	15	N
*	Maximum press on force	350	N
*	Radial play, 5 mm from bearing	<0.1	mm
*	Axial play	max 0.2	mm
*	Max. recommended input speed	5000	rpm
*	Backlash at no load	2	°
*	Backlash at nominal load	3	°
*	Temperature range	-10/+90	°C

## Options

- \* Custom ratios
- \* Custom shafts