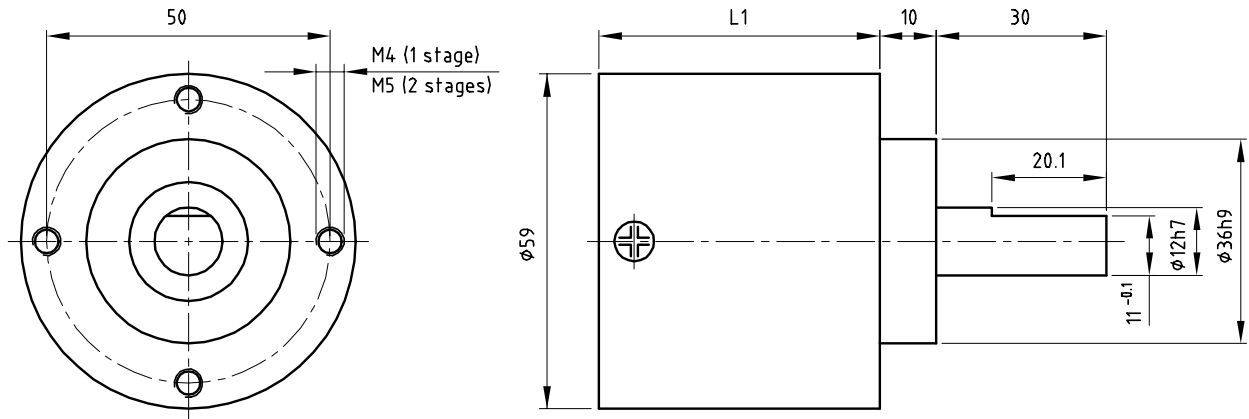


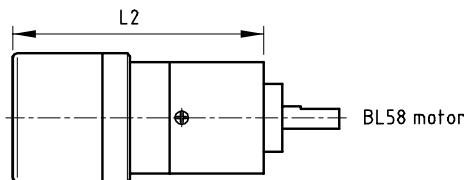
Dimensional drawing



Gearbox data

Gearbox Order number	Ratio	Exact ratio	Number of stages	Efficiency [%]	Maximum torque continuous [Nm]	Direction of rotation w.r.t. motor	Weight [g]	L1 [mm]	L2 [mm]
P59A0005AA	5:1	5.3:1	1	90	7	≠	430	49.5	132.6
P59A0012AA	12:1	11.75:1	1	90	7	≠	430	49.5	132.6
P59A0023AA	23:1	22.6:1	2	81	25	=	620	74.0	157.1
P59A0051AA	51:1	51:1	2	81	25	=	620	74.0	157.1
P59A0096AA	96:1	96:1	2	81	25	=	620	74.0	157.1
P59A0160AA	160:1	160:1	2	81	25	=	620	74.0	157.1

Product combinations



Order number of motor/gearbox :

Last 6 digits of motor number + gearbox number

General data

* Bearing on output shaft	ball	
* Maximum radial load 27 mm from mounting face	250	N
* Maximum axial load	200	N
* Max. recommended input speed	8000	rpm
* Max. backlash at nominal load	1	°
* Temperature range	-20/+80	°C

Options

- * Other standard ratios
- * Special shafts
- * Lower backlash version