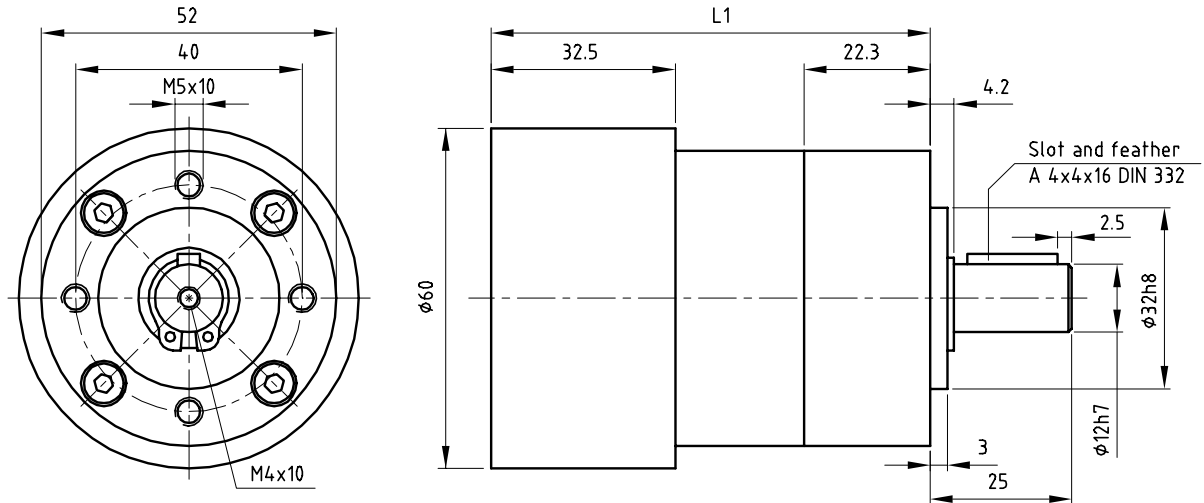


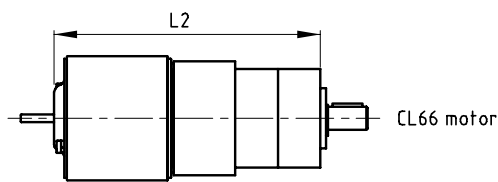
Dimensional drawing



Gearbox data

Gearbox Order number	Ratio	Exact ratio	Number of stages	Efficiency [%]	Maximum torque continuous [Nm]	Weight [g]	L1 [mm]	L2 [mm]
P52A0004AA	4:1	3.70:1	1	80	4	700	77.5	140.7
P52A0007AA	7:1	6.75:1	1	80	4	700	77.5	140.7
P52A0014AA	14:1	13.73:1	2	75	12	900	91.7	154.9
P52A0025AA	25:1	25.01:1	2	75	12	900	91.7	154.9
P52A0051AA	51:1	50.89:1	3	70	25	1100	105.8	169.0
P52A0093AA	93:1	92.70:1	3	70	25	1100	105.8	169.0
P52A0169AA	169:1	168.84:1	3	70	25	1100	105.8	169.0
P52A0308AA	308:1	307.54:1	3	70	25	1100	105.8	169.0

Product combinations



Order number of gearmotor :
Last 6 digits of motor number + gearbox number

General data

* Bearing on output shaft	ball	
* Maximum radial load for 1/2/3 stages	200/320/450	N
* Maximum axial load for 1/2/3 stages	60/100/150	N
* Radial play 7 mm from flange	max. 0.08	mm
* Axial play	max. 0.8	mm
* Maximum press on force	500	N
* Recommended input speed	3000	rpm
* Backlash at no load for all stages	0.75	°
* Direction of rotation w.r.t. motor	similaire	
* Temperature range	-30/+140	°C

Options

- * Special shafts