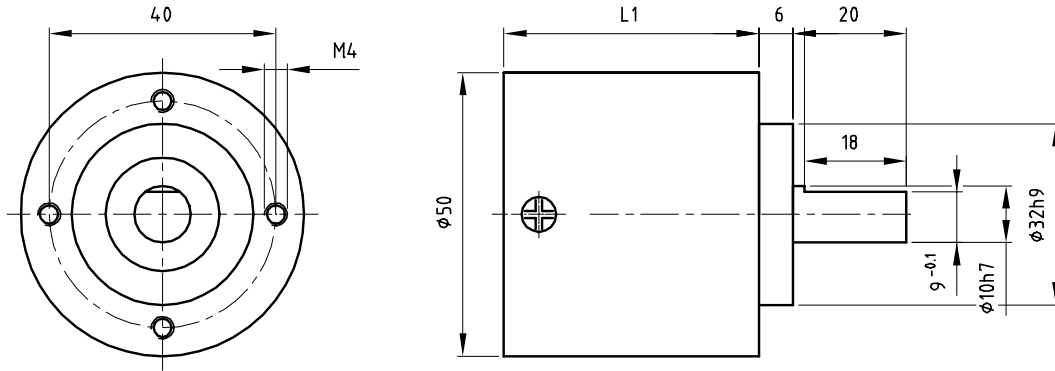


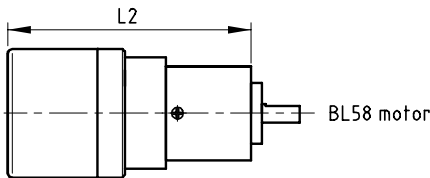
Dimensional drawing



Gearbox data

Gearbox Order number	Ratio	Exact ratio	Number of stages	Efficiency [%]	Maximum torque continuous [Nm]	Direction of rotation w.r.t. motor	Weight [g]	L1 [mm]	L2 [mm]
P50A0005AA	5:1	5:1	1	90	4	≠	400	45	128.6
P50A0013AA	13:1	13:1	1	90	4	≠	400	45	128.6
P50A0025AA	25:1	25.2:1	2	81	18	=	540	67.5	151.1
P50A0053AA	53:1	53:1	2	81	18	=	540	67.5	151.1
P50A0099AA	99:1	98.6:1	2	81	18	=	540	67.5	151.1
P50A0180AA	180:1	180.2:1	2	81	18	=	540	67.5	151.1

Product combinations



Order number of motor/gearbox :

Last 6 digits of motor number + gearbox number

General data

*	Bearings on output shaft	ball	
*	Maximum radial load 17 mm from mounting face	170	N
*	Maximum axial load	70	N
*	Max. recommended input speed	8000	rpm
*	Max. backlash at nominal load	1	°
*	Temperature range	-20/+80	°C

Options

- * Other standard ratios
- * Special shafts
- * Lower backlash version